

# Geneva Point Center

## Annual Membership/Friends of Winni



Date \_\_\_\_\_

Name \_\_\_\_\_

Address \_\_\_\_\_

City \_\_\_\_\_ St \_\_\_\_\_ Zip \_\_\_\_\_

Phone (\_\_\_\_) \_\_\_\_\_

Email \_\_\_\_\_

Please indicate how you relate to GPC (i.e. the name of the conference, camp, or event you attend at GPC, staff or former staff, volunteer, board member, neighbor, other).

\_\_\_\_\_

**New Member**  **Renewing Member**

Membership is valid for one year. To be a member in good standing and participate in the Annual Meeting of Geneva Point Center Inc., you must have made a contribution within less than one year prior to the date of the annual meeting.

Enclosed is my Annual Membership contribution of:

\$1,000  \$500  \$100  \$50  \$25 Other \$ \_\_\_\_\_

Enclosed is my Annual Friends of Winni gift of:

\$1,000  \$500  \$100  \$50  \$25 Other \$ \_\_\_\_\_

Total amount? \$ \_\_\_\_\_

(Membership Contribution + Friends of Winni)

Return this form with your check (made payable to *Geneva Point Center*) to: Geneva Point Center, 108 Geneva Point Road, Moultonborough, NH 03254

To make your contribution by Visa or MasterCard, please call the GPC Office at (603) 253-4366.

Contributions to Geneva Point Center are tax-deductible to the extent allowed by law.

# Geneva Point Center

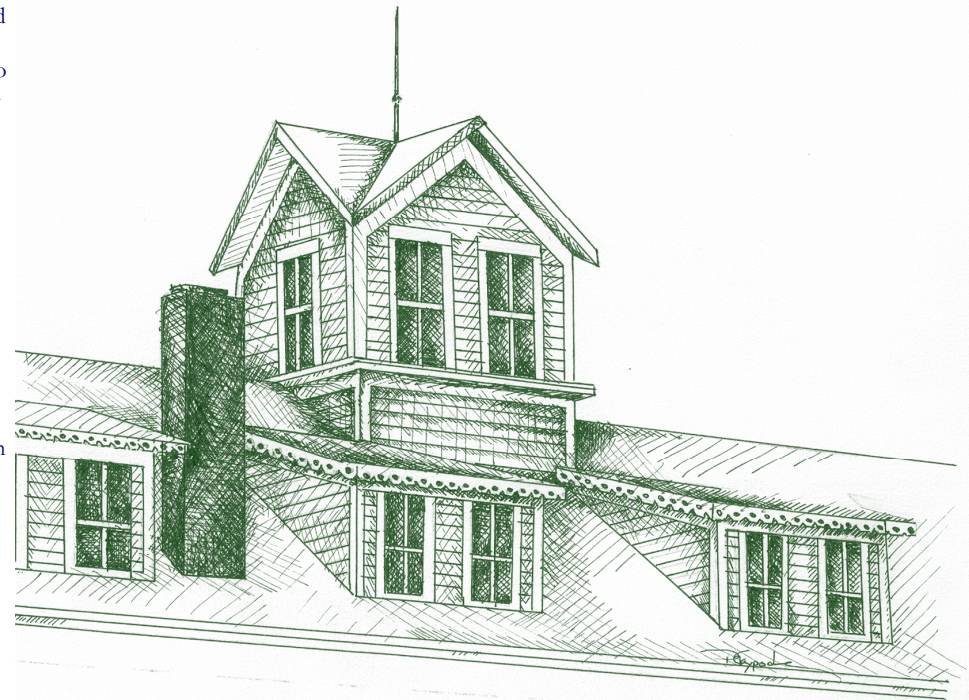
## **Belonging and Supporting**

Many people have a sense of “ownership” about GPC, but the only real way to be an “owner” is by belonging, and to “belong” you must be a member. In addition to membership, you can be a good steward by making an annual Friend of Winni Gift, volunteering your time or expertise, remembering Geneva Point in your will, giving an endowment fund donation or making a special gift. You can also encourage others to do the same.

*Every contribution helps to make GPC more vibrant and more affordable to thousands of individuals and families each year who might otherwise not be able to have the kind of renewing and enriching experience that Geneva Point so distinctly offers.*

## **Annual Membership**

Geneva Point Center is a membership based non-profit organization. As a member, you have a voice and vote at the annual meeting of the corporation and you help to elect members to the Board of Directors. Also as a member, you receive annual reports, newsletters and other communications regarding events and activities to participate in and ways to support the mission of Geneva Point Center. To be a member you must complete an annual membership form and submit it with an annual membership contribution (suggested minimum contribution is \$10). Annual membership contributions help to support the general operating budget of Geneva Point Center. To be a voting member at the annual meeting, you must have submitted an annual membership form along with your annual membership contribution less than one year prior to the annual meeting.



## **Annual Friends of Winni Gifts**

Friends of Winni Gifts are used to support ongoing efforts to maintain and improve the buildings and grounds of Geneva Point Center. The success of the Annual Friends of Winni campaign directly impacts the amount of funds available each year to purchase supplies and materials and otherwise help offset the cost of repairs, scheduled maintenance, and improvement projects. You do not have to be a member to be a Friend of Winni.

## **Remembering and Sustaining**

By remembering Geneva Point Center in your will, you can help to sustain and strengthen GPC well into its second century of service.